

For Lease

# Post Pavilion



6255 S. Durango Dr.  
Suite 110  
Las Vegas, NV 89113

**Jason Otter**  
Founding Partner  
702.954.4109  
jotter@logicCRE.com  
S.0168161.LLC

**Bart Debuono**  
Senior Associate  
702.954.4129  
bdebuono@logicCRE.com  
S.0176508.LLC

**Cooper Powell**  
Senior Associate  
702.954.4154  
cpowell@logicCRE.com  
BS.0145955.LLC

**Madeline Nuha**  
Associate  
702.954.4131  
mnuha@logicCRE.com  
BS.0146665

**Elena Otter**  
Client Relations Representative  
702.604.3388  
eotter@logicCRE.com

Listing Snapshot



**\$4.25 PSF NNN**  
Lease Rate



**± 1,200 SF**  
Available Square Footage



**Southwest**  
Submarket

Property Highlights

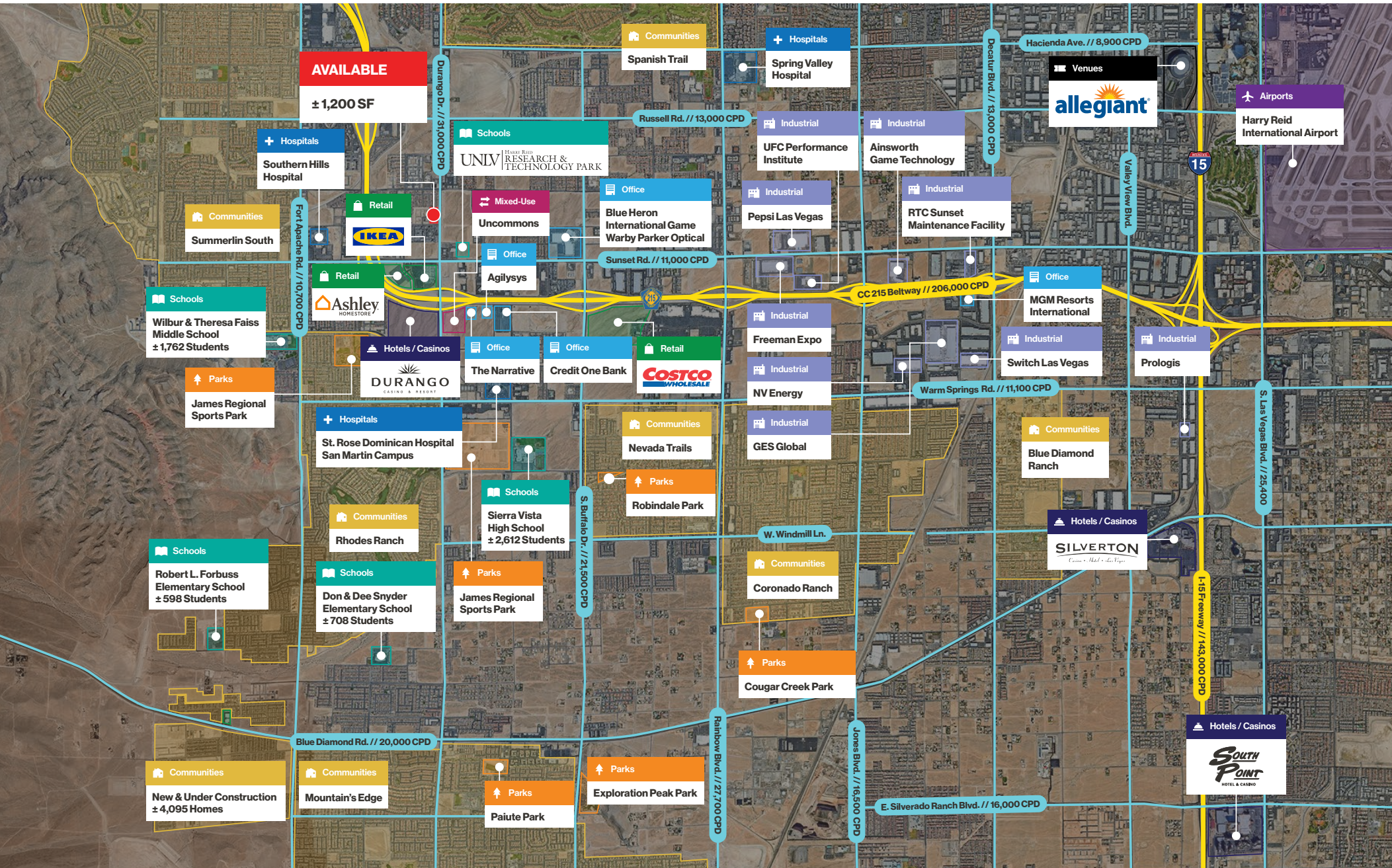
- ± 1,200 SF second-generation inline space available
- Modern retail center (built in 2022) in a rapidly developing corridor
- Prime location at busy Durango & Post intersection and across the street from UNLV Harry Reid Research and Technology Park
- Retail center located in the new Clark County Innovation District
- Traffic counts: ± 31,000 vehicles daily on S. Durango Drive; ± 206,000 vehicles daily on CC-215 Beltway
- Strategic proximity to key destinations: The Bend, Durango Station Casino, IKEA, Ashley Furniture, Southern Hills Hospital, UNLV Harry Reid Research and Technology Park and UnCommons
- **Do Not Disturb Tenant**

Demographics

	1-mile	3-mile	5-mile
2024 Population	14,640	153,715	361,576
2024 Average Household Income	\$106,992	\$112,063	\$111,753
2024 Total Households	6,093	60,507	139,934



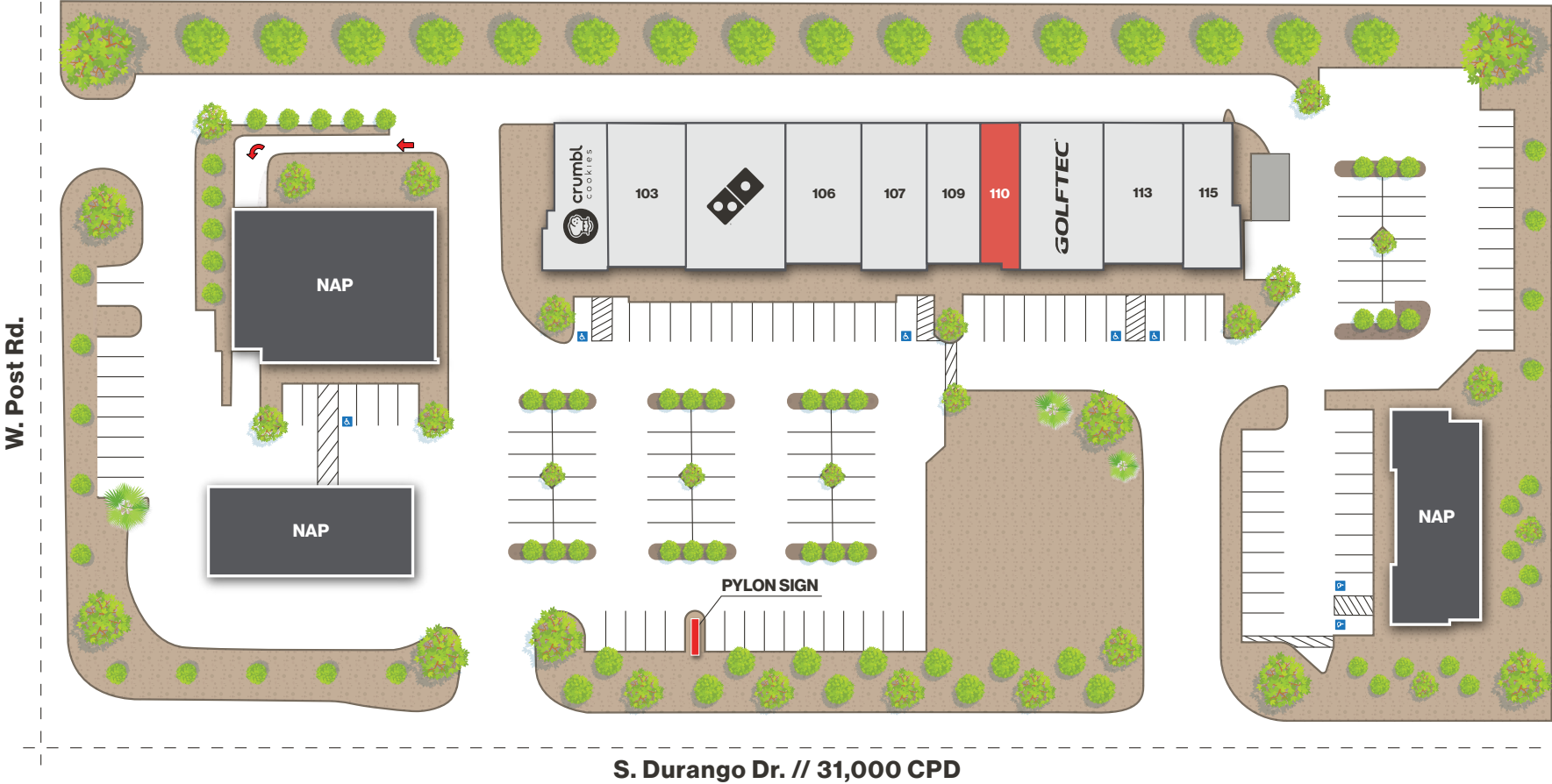






Site Plan

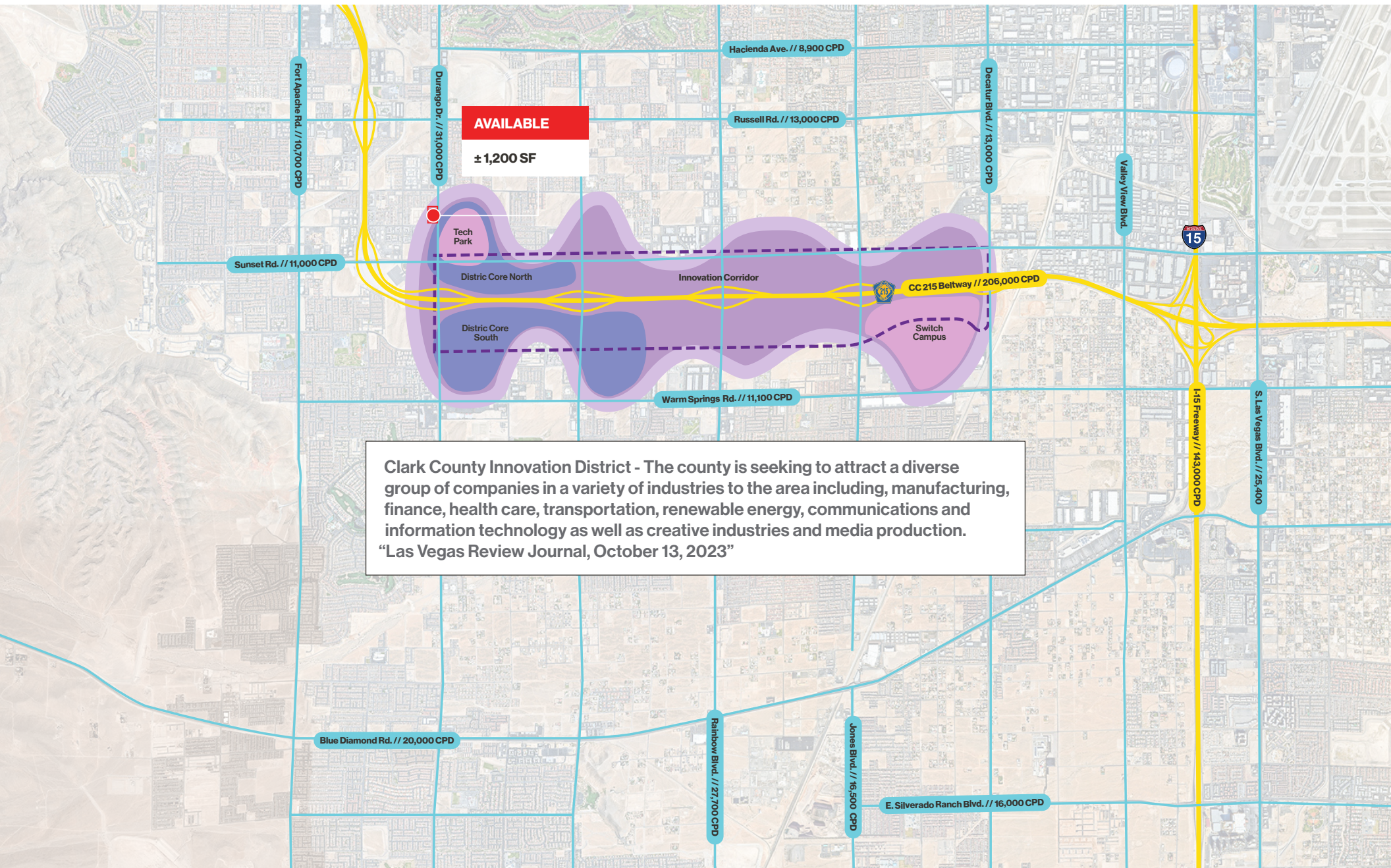
Available      NAP





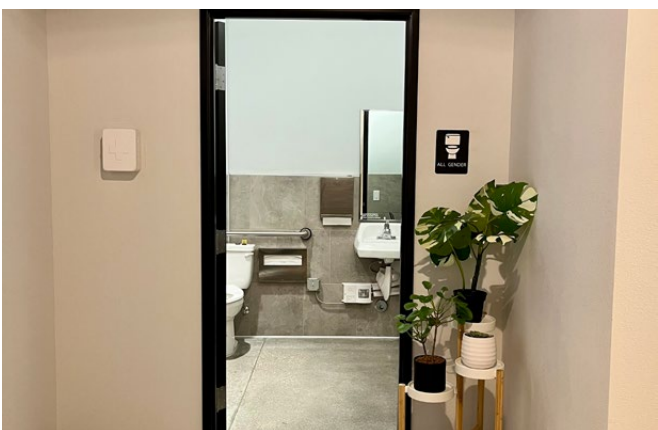
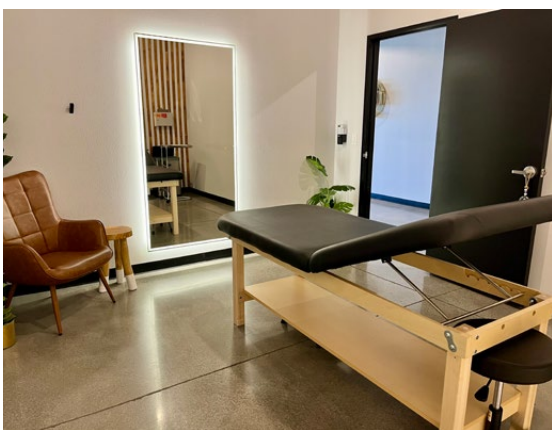
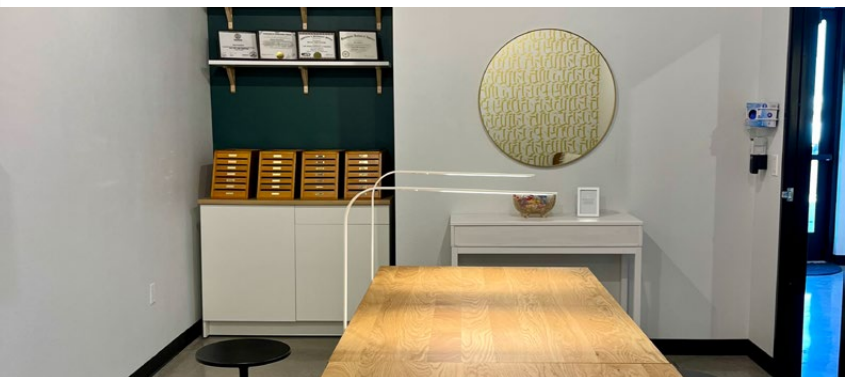
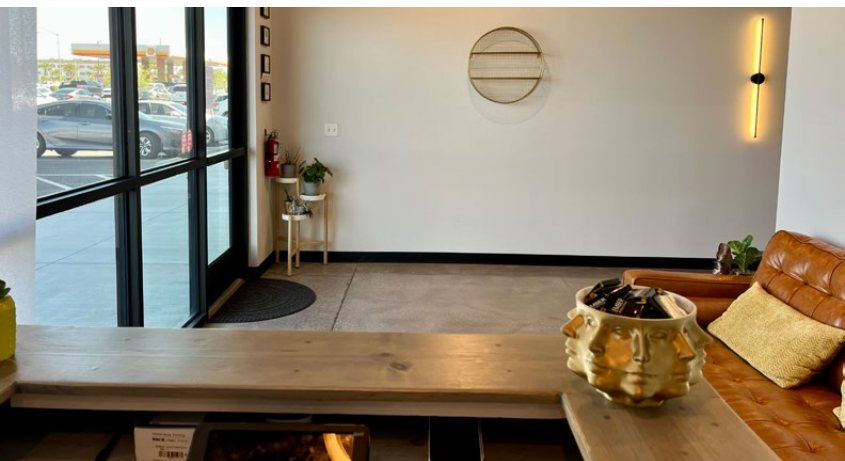
# Innovation Corridor Map

 Innovation Corridor  District Core  District Connectivity





Interior Property Photos | Suite 110





Property Photos





# LOGIC Commercial Real Estate

## Specializing in Brokerage and Receivership Services



Join our email list and  
connect with us on LinkedIn

The information herein was obtained from sources deemed reliable; however LOGIC Commercial Real Estate makes no guarantees, warranties or representation as to the completeness or accuracy thereof.

For inquiries please  
reach out to our team.

**Jason Otter**

Founding Partner  
702.954.4109  
jotter@logicCRE.com  
S.0168161.LLC

**Bart Debuono**

Senior Associate  
702.954.4129  
bdebuono@logicCRE.com  
S.0176508.LLC

**Cooper Powell**

Senior Associate  
702.954.4154  
cpowell@logicCRE.com  
BS.0145955.LLC

**Madeline Nuha**

Associate  
702.954.4131  
mnuha@logicCRE.com  
BS.0146665

**Elena Otter**

Client Relations Representative  
702.604.3388  
eotter@logicCRE.com